

# Elements of Art

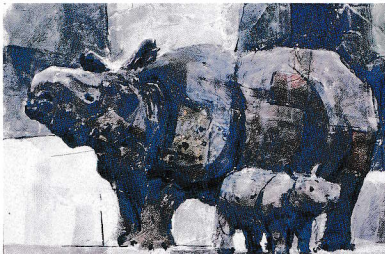
All artists have the same elements of art with which to work. They are **line**, **shape**, **color**, **value**, **form**, **texture**, and **space**. All the art in the world is done with one or more of these elements. If we want to make art, we need to understand these seven elements of art.



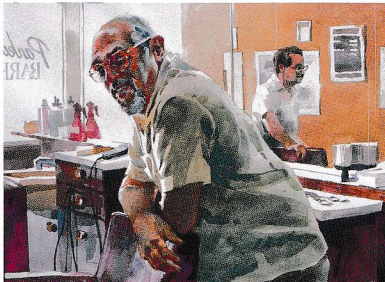
We can see the art elements in nature in this photograph. **Line** — in the road and the wire; **Shape** — of the roof, road, and trees; **Color** — in the cool green trees and the warm red roof; **Form** — of the house and trees; **Texture** — of the trees and road; **Space** — between us and the house.



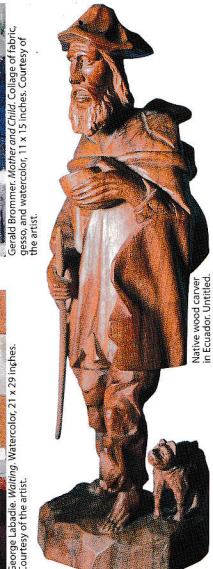
Line, Shape, Color, Value



Texture, Shape, Value, Color



Line, Shape, Color, Texture, Value, Space



Form, Value, Color

## Line



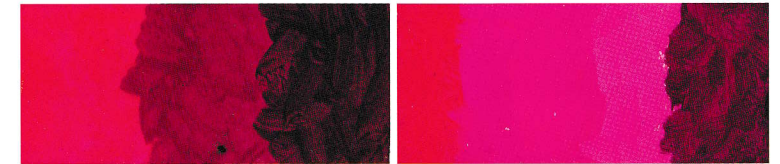
Different tools make different kinds of **lines**.

## Shape



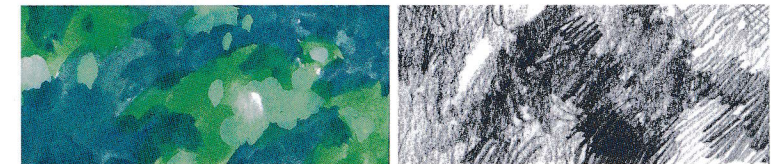
**Shapes** come in many types and sizes.

## Color



Every **color** can be bright, dull, dark, or light.

## Value



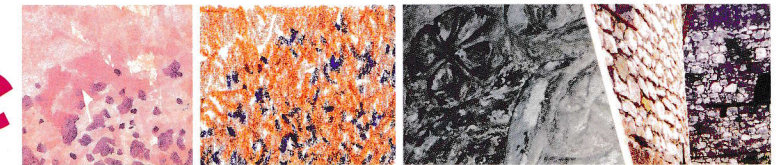
**Value** refers to dark and light in painting or drawing.

## Form



**Form** is three-dimensional, and takes up space.

## Texture



**Texture** is how a surface of something feels or looks.

## Space



We use illusions to make **space** in art.

# Principles of Design

Once you are familiar with the Elements of Art, you need to learn how the Principles of Design can make your artwork better. The Principles of Design are **balance**, **contrast**, **emphasis**, **movement**, **pattern**, **rhythm**, and **unity**. They help artists organize artwork so it feels more comfortable to viewers.



George Gibson, 'Patio', Watercolor, 22 x 30 in. Courtesy of the artist.

In this painting, the arches set up a **rhythm**. **Emphasis** is on the working women. There is **movement** on both dark and light value paths to the focal area. **Unity** is created with warm color dominance. **Contrast** is seen in the size and value differences. The large arch in the foreground **balances** the small, busy shapes of the women.



Mary Alice Baileman, 'Gathering of Flowers', Mixed media, 21 x 29 inches. Courtesy of the artist.

**Movement, Emphasis, Balance, Unity**



Majolica bowl, 8 x 12 inches, Puebla, Mexico

**Pattern, Balance, Movement, Unity, Contrast, Emphasis, Rhythm**

## Balance



**Balance** is the comfortable arrangement of things in art.

## Contrast



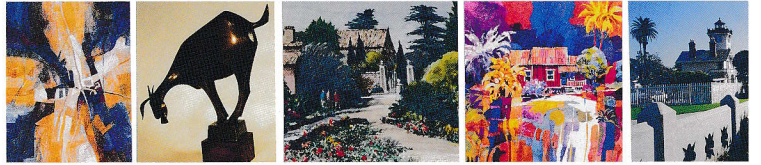
**Contrast** is the difference between elements in an artwork.

## Emphasis



**Emphasis** is the creation of a focal area in a work of art.

## Movement



**Movement** is how we get around in a work of art.

## Pattern



**Pattern** decorates surfaces with planned, repeated units.

## Rhythm



**Rhythm** is the repetition of shapes, lines, and forms.

## Unity



**Unity** means that all is in **harmony**. **Variety** adds interest.