



surrealism



A full moon is visible in the upper left quadrant of the image, set against a dark, starry night sky. Below the moon, a body of water reflects the moon's light, creating a shimmering path that leads towards the bottom center of the frame. The overall scene is serene and atmospheric.

What is Surrealism?

- ➡ **Early 1920's** cultural and art movement
- ➡ **desire to reject traditional art standards**
- ➡ **the unconscious mind played a significant role in this movement**

A full moon is visible in the upper left quadrant of the image, set against a dark, starry night sky. Below the moon, a body of water reflects its light, creating a shimmering path of light that extends towards the bottom center of the frame. The overall scene is serene and atmospheric.

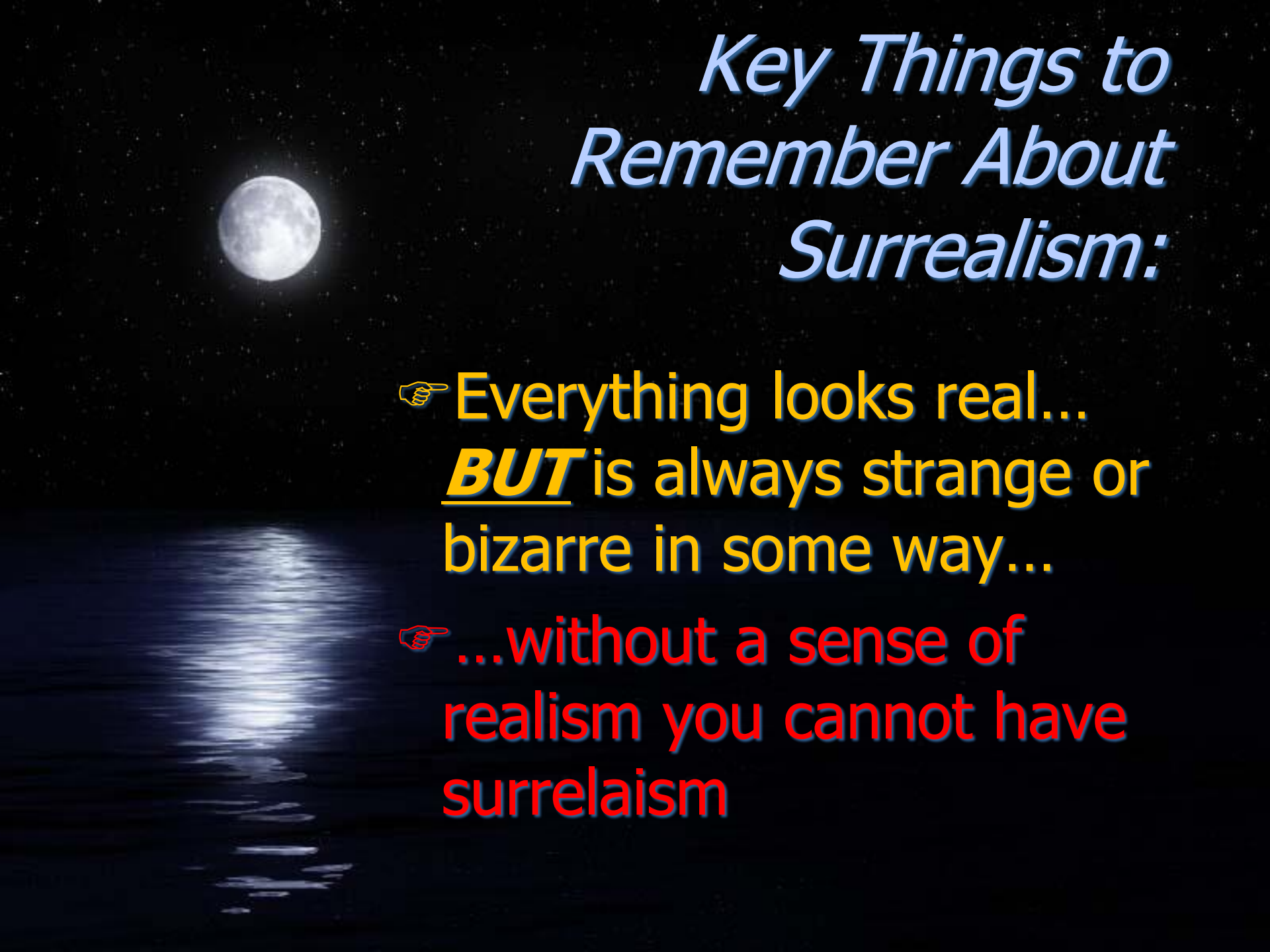
Unconscious (noun)

- ☞ The part of the mind containing memories, thoughts, feelings, and ideas that we are not generally aware of but reveal themselves in dreams

A full moon is visible in the upper left quadrant of the image, set against a dark, starry sky. Below the moon, a body of water reflects its light, creating a shimmering path that leads towards the bottom center of the frame. The overall scene is serene and evocative, fitting the theme of surrealism.

Characteristics of Surrealism in Art:

- ☞ Elements of surprise
- ☞ Unexpected combinations
- ☞ Unrealistic proportions (size relationships)
- ☞ Transformation or Metamorphosis
- ☞ Illogical or inconsistent parts
- ☞ Dreamlike, unconscious state of mind
- ☞ Bizarre, Weird, Strange...
- ☞ Impossibly real

A full moon is visible in the upper left quadrant of the image, set against a dark, starry sky. Below the moon, a body of water reflects the moon's light, creating a shimmering path that leads towards the bottom center of the frame. The overall scene is serene and atmospheric, with a deep blue and black color palette.

Key Things to Remember About Surrealism:

- ☞ Everything looks real...
BUT is always strange or bizarre in some way...
- ☞ ...without a sense of realism you cannot have surrealism



René Magritte
(1898-1967)

*Looking at **Magritte's** work...*



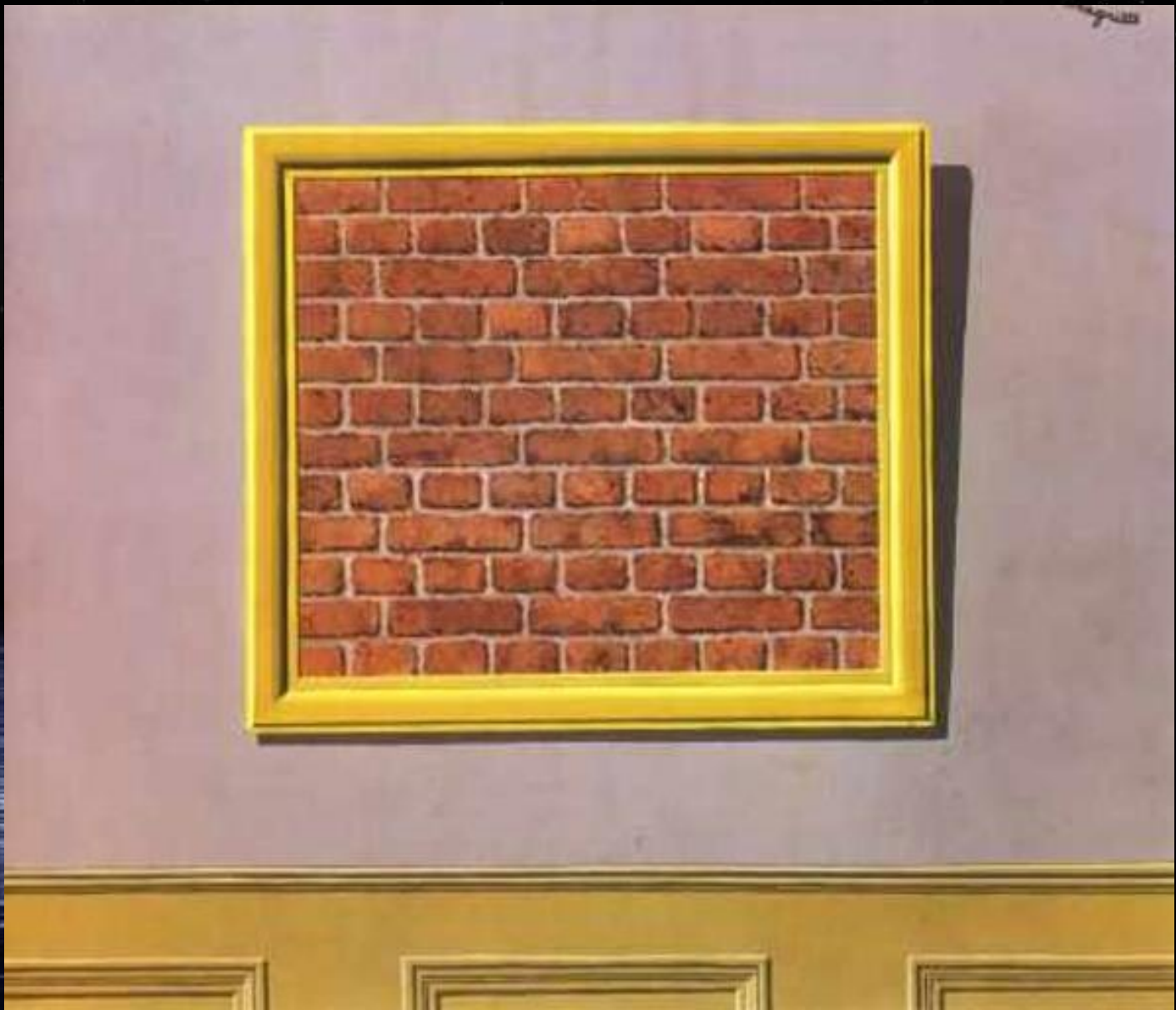
*What
characteristics of Surrealism
do you see....?*



Self-portrait



La
Reproduction
Interdite
(English: Not to
be Reproduced)



The Empty Picture Frame



The Human Condition (1935)



*The
Son of
Man*



The Difficult
Crossing (1926)



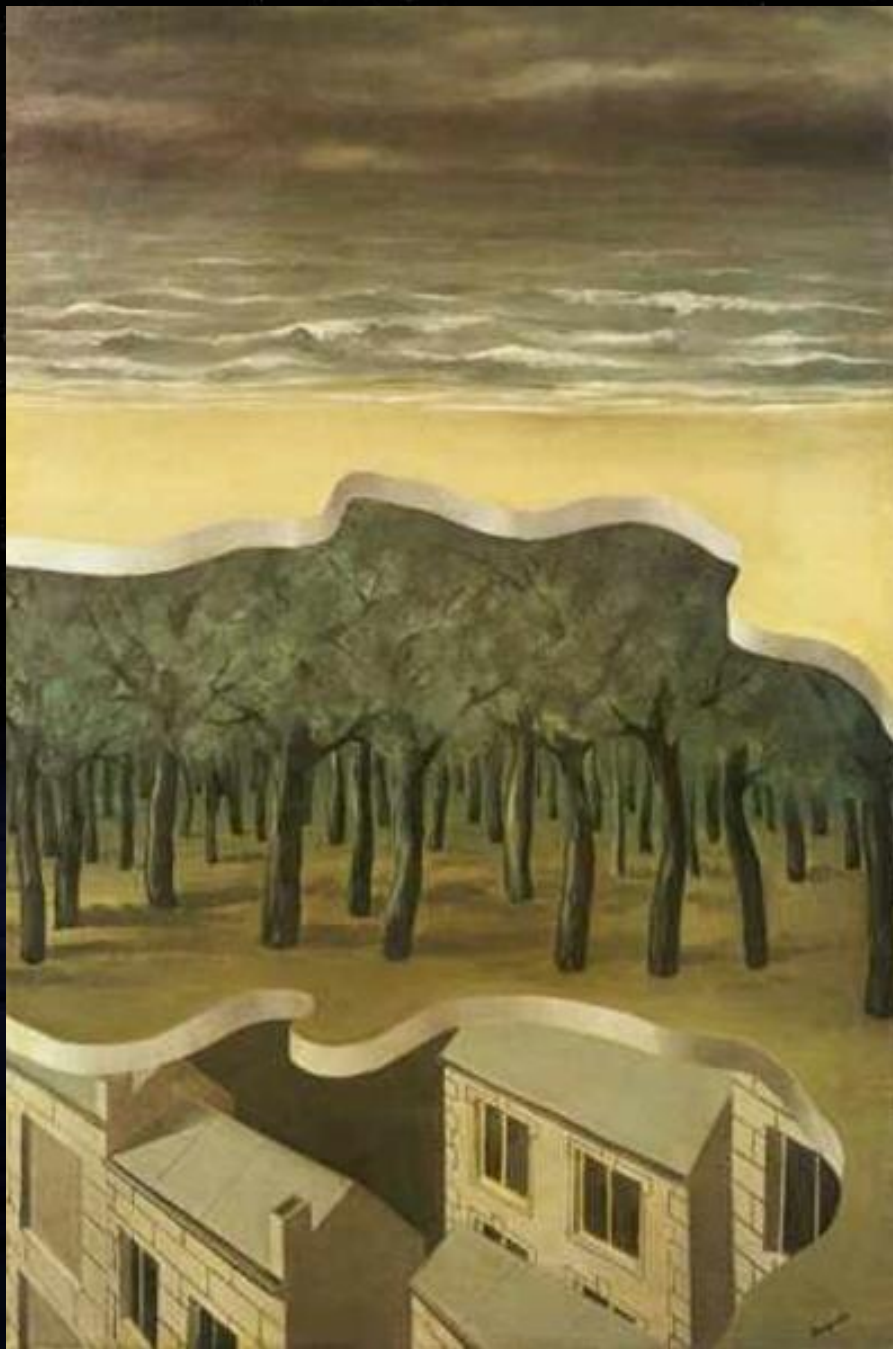
The Tempest, windows within windows



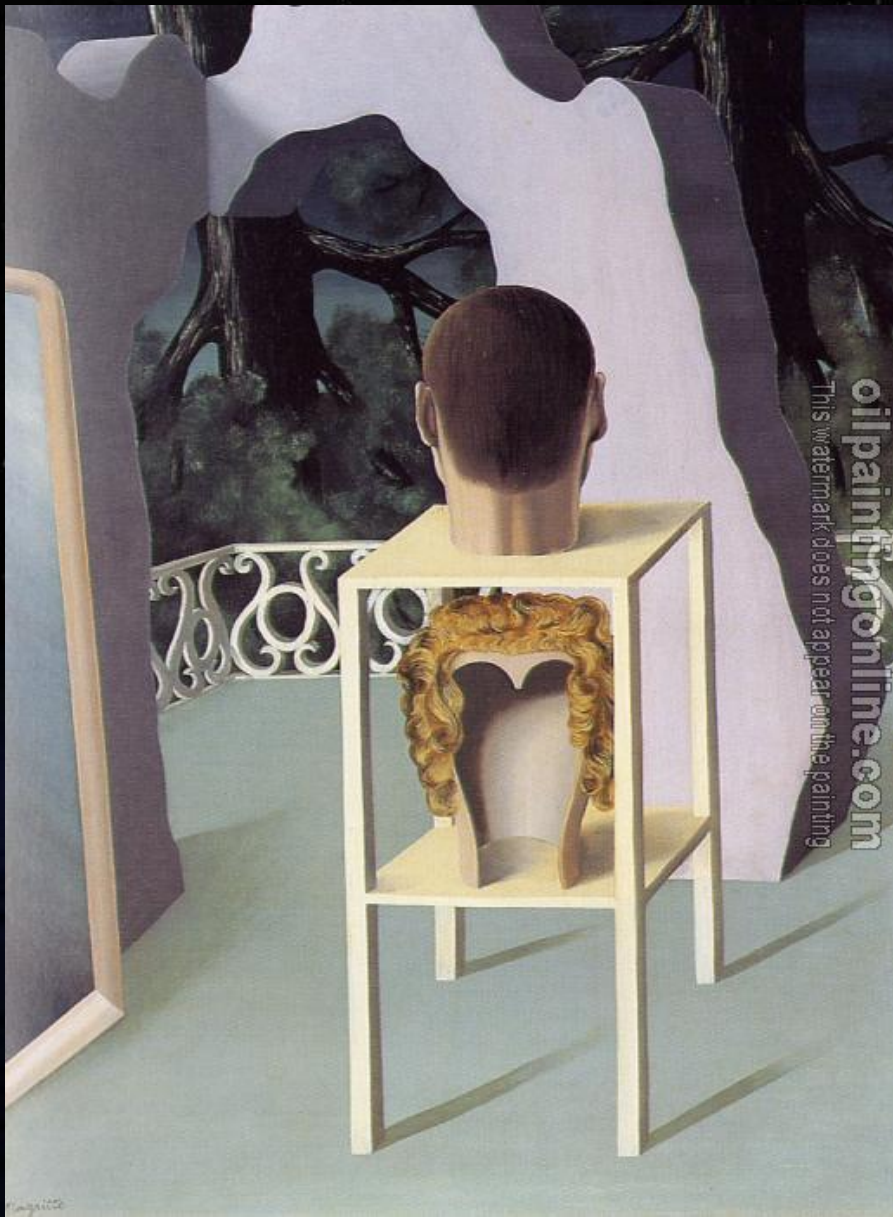
Homesickness



The False Mirror



Popular Panorama



Midnight Marriage



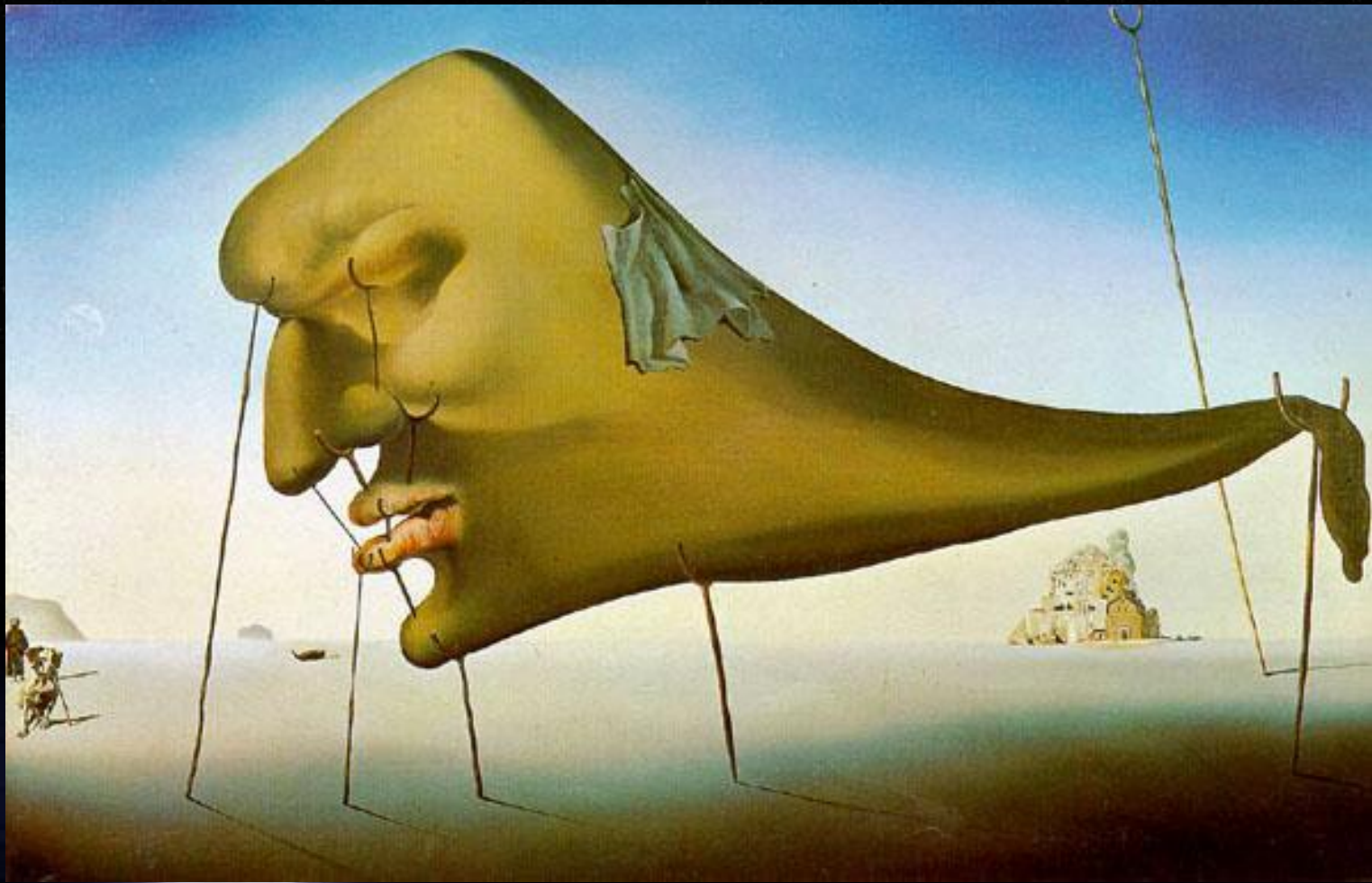
Salvador Dali

(1904-1989)

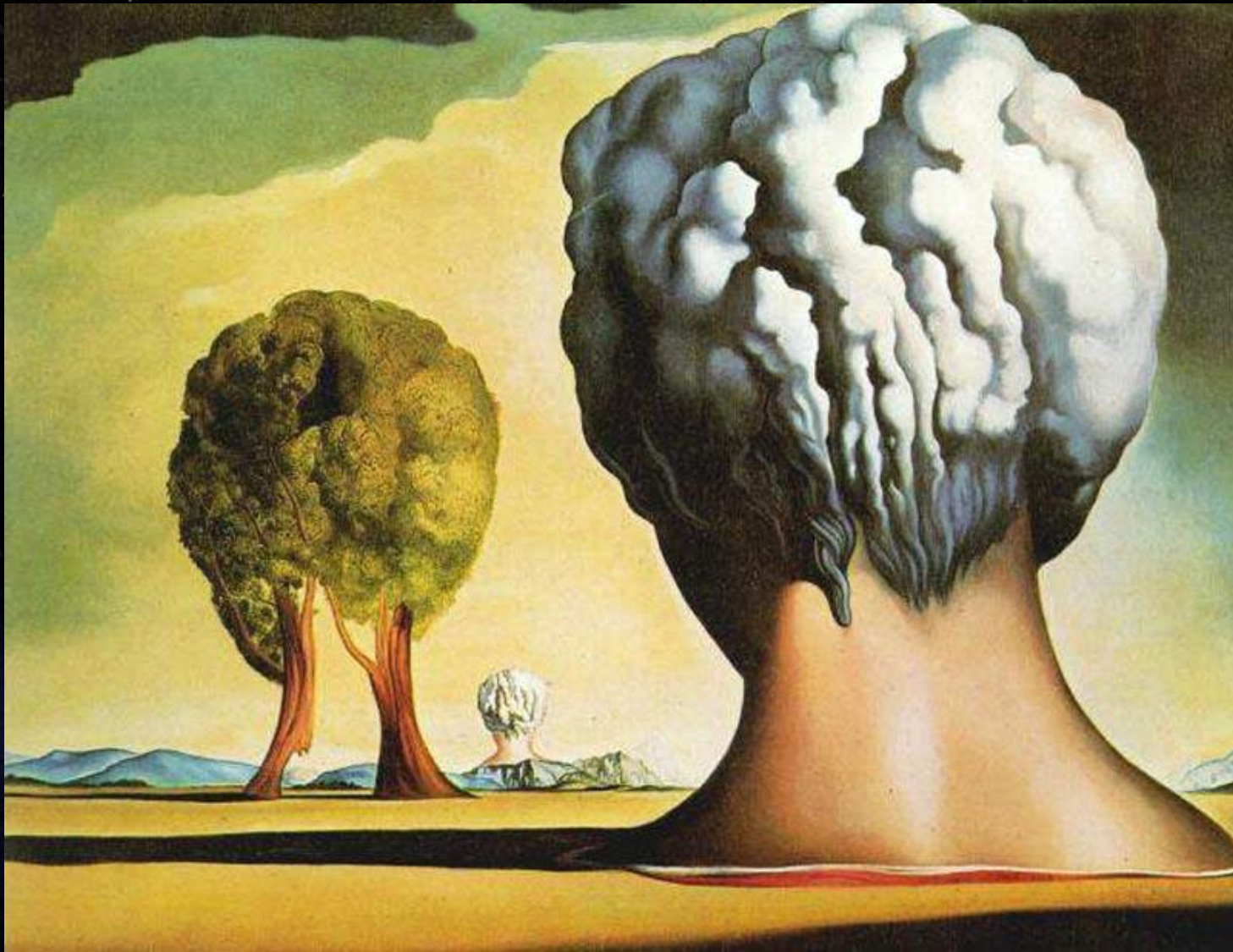
*Looking at **Dali's** work...*



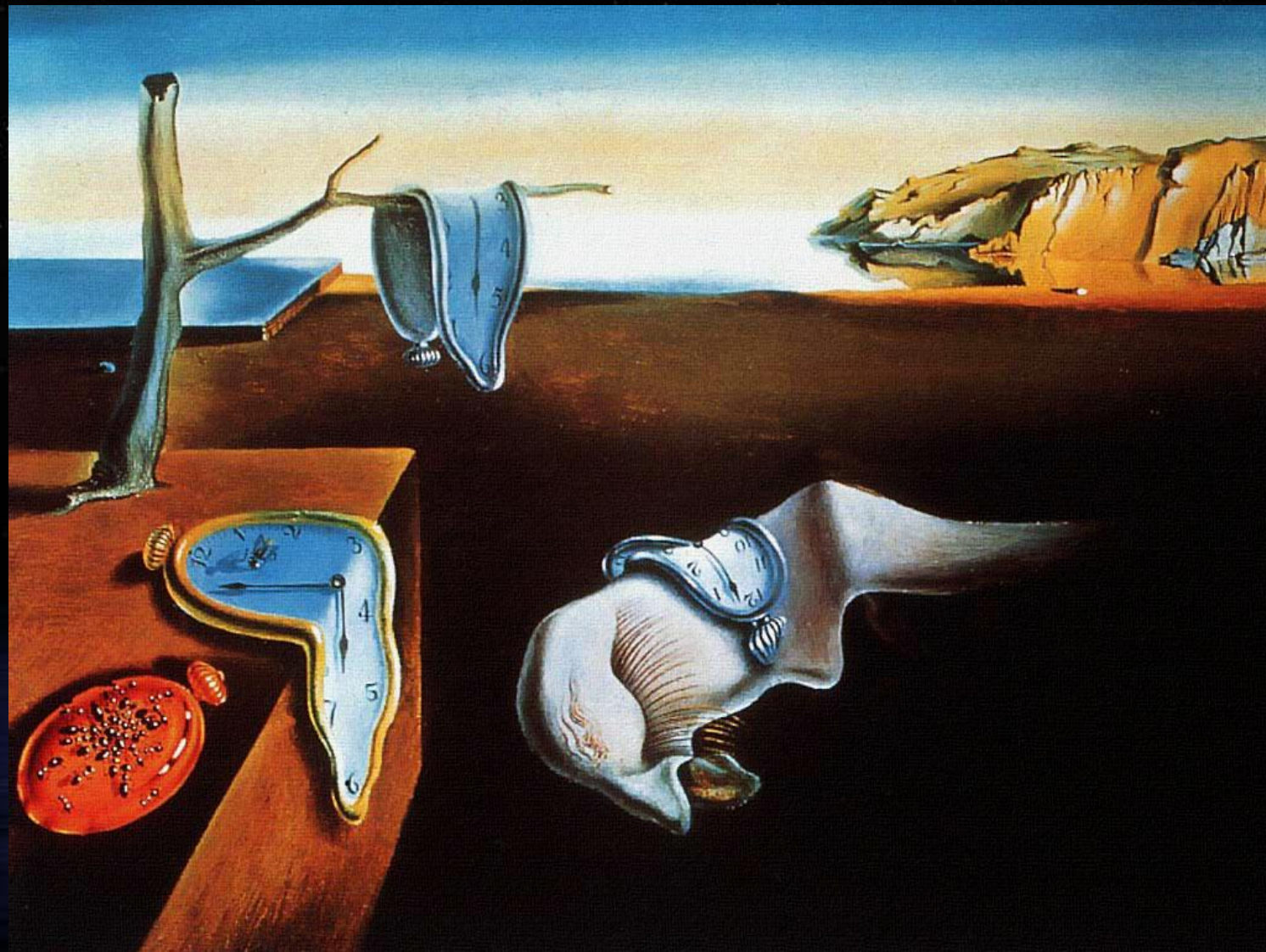
*What
characteristics of Surrealism
do you see...?*



The Dream



Three Sphinxes of Bikini



The Persistence of Memory



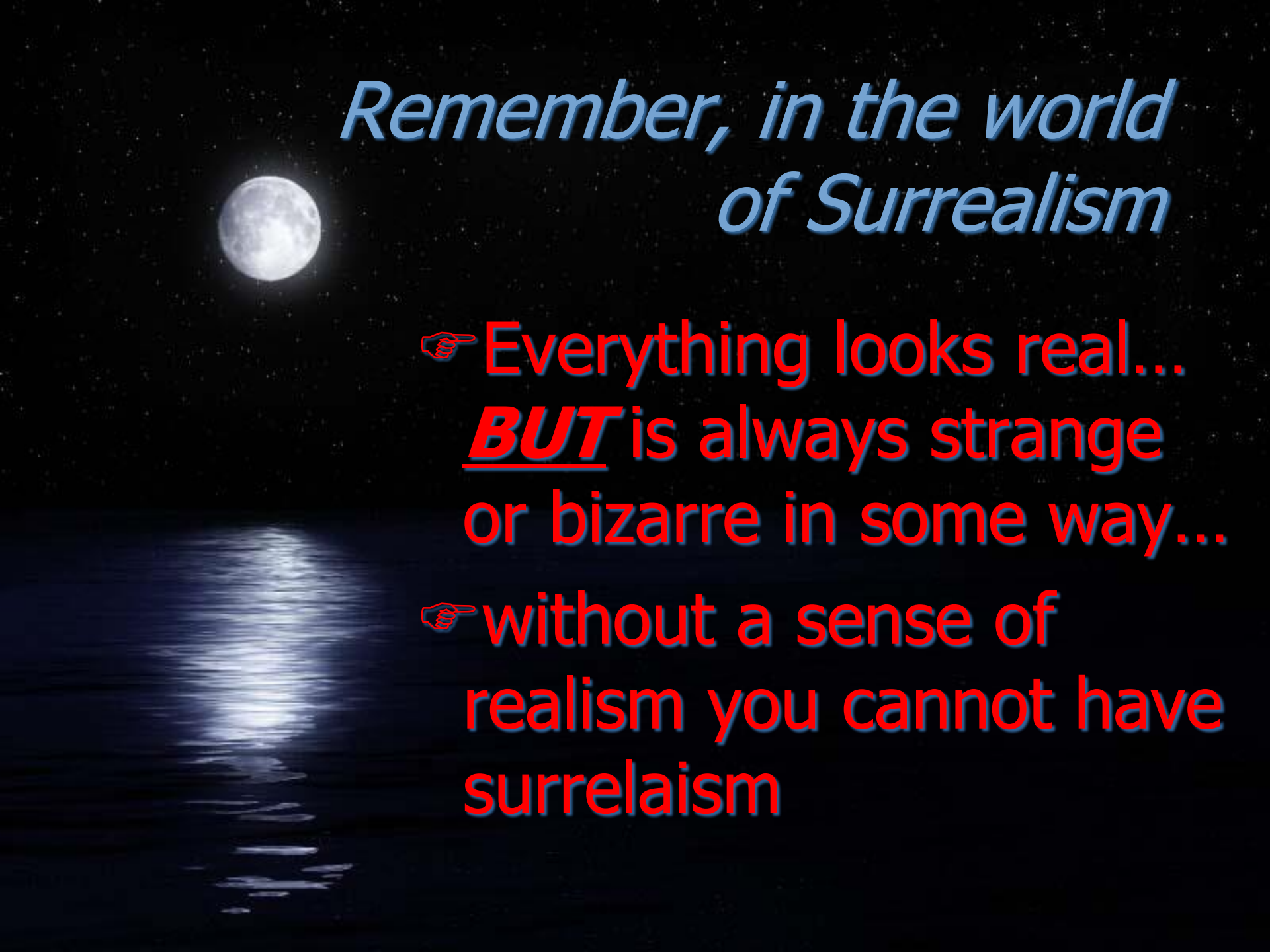
Swans Reflecting Elephants



The Rose



People vs. Salvador Dali

A full moon is visible in the upper left quadrant of the image, set against a dark, starry night sky. Below the moon, a body of water reflects the moon's light, creating a shimmering path that leads towards the bottom center of the frame. The overall scene is serene and atmospheric, typical of a surrealist landscape.

Remember, in the world of Surrealism

- ☞ Everything looks real...
BUT is always strange
or bizarre in some way...
- ☞ without a sense of
realism you cannot have
surrealism

Several principles of perspective create the illusion of depth

PARTS OF A LANDSCAPE

- FOREGROUND
- MIDDLEGROUND
- BACKGROUND
- HORIZON LINE



- Closer objects *overlap* objects further away.
- Objects/shapes become *smaller* the farther away they are; this is the principle of linear perspective.